

 **BOEING**  
COMPONENT  
MAINTENANCE MANUAL

TO: ALL HOLDERS OF STRUT FORWARD FAIRING ASSEMBLY COMPONENT MAINTENANCE  
MANUAL 54-52-10

REVISION NO. 3 DATED APR 01/92

HIGHLIGHTS

Pages which have been added or revised are outlined below together with the highlights of the revision. Remove and insert the affected pages as listed and enter Revision No. and date on the Record of Revision Sheet.

CHAPTER/SECTION

AND PAGE NO.

DESCRIPTION OF CHANGE

TR & SB RECORD

Added PRR B11341-2 to TR & SB Record cross reference.  
(Fairing assemblies 313T2100-113 and -121 were added  
during rev 2 to this manual (per PRR B11341-2))

1

1011

Added shim BACS40R025B015 (item 53, IPL Fig. 1) to  
Fig. 1, Sh 1.

1015

Added collar BACB30BL6 (item 214, IPL Fig. 1) to  
Fig. 1, Sh 5.

**54-52-10**

HIGHLIGHTS

01.1

Page 1

Apr 01/92

**STRUT FORWARD FAIRING ASSEMBLY  
(CF6-80C)**

**PART NUMBERS 313T2100-2,-113,-121**

COMPONENT MAINTENANCE MANUAL  
WITH  
ILLUSTRATED PARTS LIST

**54-52-10**

TITLE PAGE

Page 1

Jan 01/92

01.1



REVISION RECORD

- Retain this record in front of manual. On receipt of revision, insert revised pages in the manual, and enter revision number, date inserted and initial.

REVISION NUMBER	REVISION DATE	DATE FILED	BY	REVISION NUMBER	REVISION DATE	DATE FILED	BY

TEMPORARY REVISION AND SERVICE BULLETIN RECORD

BOEING SERVICE BULLETIN	BOEING TEMPORARY REVISION	OTHER DIRECTIVE	DATE OF INCORPORATION INTO MANUAL
		PRR B11341-2	JAN 01/92

**54-52-10**

TR &amp; SB RECORD

01.1

Page 1

Apr 01/92


**BOEING**  
 COMPONENT  
 MAINTENANCE MANUAL

PAGE	DATE	CODE	PAGE	DATE	CODE
54-52-10			REPAIR-GENERAL		
			601	JUL 10/87	01
			602	BLANK	
TITLE PAGE			REPAIR 1-1		
1	JAN 01/92	01.1	601	JAN 01/92	01.1
2	BLANK		602	JAN 01/92	01.1
REVISION RECORD			REPAIR 2-1		
1	JUL 10/87	01	601	JAN 01/92	01.1
2	BLANK		602	BLANK	
TR & SB RECORD			ASSEMBLY		
*1	APR 01/92	01.1	701	JAN 01/92	01.1
2	BLANK		702	BLANK	
LIST OF EFFECTIVE PAGES			FITS AND CLEARANCES		
*1	APR 01/92	01	801	JUL 10/87	01
THRU LAST PAGE			802	BLANK	
CONTENTS			ILLUSTRATED PARTS LIST		
1	JUL 10/87	01	1001	JUL 10/87	01
2	BLANK		*1002	APR 01/92	01.101
INTRODUCTION			*1003	APR 01/92	01.101
1	JUL 10/87	01	*1004	APR 01/92	01.101
2	BLANK		*1005	APR 01/92	01.101
DESCRIPTION & OPERATION			*1006	APR 01/92	01.101
1	JUL 10/87	01	*1007	APR 01/92	01.101
2	BLANK		*1008	APR 01/92	01.101
DISASSEMBLY			*1009	APR 01/92	01.101
301	JUL 10/87	01	*1010	BLANK	
302	BLANK		*1011	APR 01/92	01.1
CLEANING			*1012	APR 01/92	01.1
401	JUL 10/87	01	*1013	APR 01/92	01.1
402	BLANK		*1014	APR 01/92	01.1
CHECK			*1015	APR 01/92	01.1
501	JUL 10/87	01	*1016	APR 01/92	01.1
502	BLANK		*1017	APR 01/92	01.101
			*1018	APR 01/92	01.101
			*1019	APR 01/92	01.101
			*1020	APR 01/92	01.101
			*1021	APR 01/92	01.101
			*1022	APR 01/92	01.101

\* = REVISED, ADDED OR DELETED

54-52-10

EFFECTIVE PAGES

CONTINUED Page 1

01 Apr 01/92

PAGE	DATE	CODE	PAGE	DATE	CODE
ILLUSTRATED PARTS LIST		CONT.			
*1023	APR 01/92	01.101			
*1024	APR 01/92	01.101			
*1025	APR 01/92	01.101			
*1026	APR 01/92	01.101			
*1027	APR 01/92	01.101			
*1028	APR 01/92	01.101			
*1029	APR 01/92	01.101			
*1030	APR 01/92	01.101			

\* = REVISED, ADDED OR DELETED

**54-52-10**

EFFECTIVE PAGES  
 LAST PAGE Page 2  
 01 Apr 01/92



TABLE OF CONTENTS

<u>Paragraph Title</u>	<u>Page</u>
Description and Operation . . . . .	1
Testing and Trouble Shooting (not applicable)	
Disassembly . . . . .	301
Cleaning. . . . .	401
Check . . . . .	501
Repair. . . . .	601
Assembly. . . . .	701
Fits and Clearances . . . . .	801
Special Tools (not applicable)	
Illustrated Parts List. . . . .	1001

**54-52-10**

CONTENTS

01

Page 1

Jul 10/87



## INTRODUCTION

The instructions in this manual provide the information necessary to perform maintenance functions ranging from simple checks and replacement to complete shop-type repair.

This manual is divided into separate sections:

- |                                                    |                              |
|----------------------------------------------------|------------------------------|
| 1. Title Page                                      | 4. List of Effective Pages   |
| 2. Record of Revisions                             | 5. Table of Contents         |
| 3. Temporary Revision &<br>Service Bulletin Record | 6. Introduction              |
|                                                    | 7. Procedures & IPL Sections |

Refer to the Table of Contents for the page location of applicable sections.

The beginning of the REPAIR section includes a list of the separate repairs, a list of applicable standard Boeing practices, and an explanation of the True Position Dimensioning symbols used.

An explanation of the use of the Illustrated Parts List is provided in the Introduction to that section.

All weights and measurements used in the manual are in English units, unless otherwise stated. When metric equivalents are given they will be in parentheses following the English units.

Design changes, optional parts, configuration differences and Service Bulletin modifications create alternate part numbers. These are identified in the Illustrated Parts List (IPL) by adding an alphabetical character to the basic item number. The resulting item number is called an alpha-variant. Throughout the manual, IPL basic item number references also apply to alpha-variants unless otherwise indicated.

# 54-52-10

INTRODUCTION

01

Page 1

Jul 10/87





STRUT FORWARD FAIRING ASSEMBLY

DESCRIPTION AND OPERATION

1. Description and Operation

A. The forward fairing assembly consists of an aluminum structure covered with fiberglass/epoxy over honeycomb sandwich panels. There is one fitting assembly forward and two index bolts and latch assemblies aft. The forward fairing assembly is part of the strut protective covering which provides for smooth airflow. The forward fairing assembly is non-operational by itself.

2. Leading Particulars (approximate)

Length -- 85 inches  
Width -- 30 inches  
Height -- 13 inches  
Weight -- 40 pounds

54-52-10

DESCRIPTION & OPERATION

01

Page 1

Jul 10/87



DISASSEMBLY

1. Use standard industry practices for disassembly of this component.

NOTE: Disassemble this component only as necessary to complete fault isolation, determine the serviceability of parts, perform required repairs, and restore the unit to serviceable condition.

**54-52-10**

DISASSEMBLY

01

Page 301

Jul 10/87



**BOEING**  
COMPONENT  
MAINTENANCE MANUAL

CLEANING

CAUTION: DO NOT VAPOR DEGREASE GRAPHITE ARAMID EPOXY STRUCTURES WITH CHLORINATED CLEANING AGENTS SUCH AS METHYLENE CHLORIDE, TRICHLOROETHYLENE, AND TRICHLOROETHANE. CHLORINATED CLEANING AGENTS WILL CAUSE DAMAGE TO GRAPHITE/ARAMID EPOXY STRUCTURES.

1,1,1-TRICHLOROETHANE IS ONE OF THE SOLVENTS ALLOWED FOR CLEANING COMPOSITE COMPONENTS. DO NOT SUBMERGE PARTS IN THE SOLVENT OR ALLOW STANDING SOLVENT ON THE PARTS OR DAMAGE MAY OCCUR. USE 1,1,1-TRICHLOROETHANE ONLY AS A WIPE SOLVENT.

1. Clean all parts using standard industry practices per 20-30-03, except rubber seals.
2. Clean seals (5, 10) with a solution of mild soap and water.

54-52-10

01  
CLEANING  
Page 401  
Jul 10/87



CHECK

1. Check all parts for obvious defects in accordance with standard industry practices.
2. Magnetic particle check per 20-20-01 -- Nut (225), plate (245).
3. Penetrant check per 20-20-02 -- Fitting (210).
4. Check honeycomb and bonded parts for evidence of delamination, internal water, scratches, and contour defects.
  - A. Examine for delamination ultrasonically.
  - B. Examine areas suspected of containing water radiographically to determine extent of damage.
  - C. Examine edges of panel carefully for cuts and abrasions. Delamination starts very easily from damage to an edgemember of honeycomb panel.
  - D. Refer to 767 Structural Repair Manual 54-52-70 for allowable damage data.

54-52-10

CHECK

01

Page 501

Jul 10/87

REPAIR – GENERAL1. Content

- A. Repair, refinish and replacement procedures are included in separate repair sections as follows:

<u>P/N</u>	<u>NAME</u>	<u>REPAIR</u>
313T2106	FITTING ASSEMBLY	1-1
--	MISC PARTS REFINISH	2-1

2. Standard Practices

- A. Refer to the following standard practices as applicable, for details of procedures in individual repairs:

20-10-06	Repair of Conductive Coatings
20-30-03	General Cleaning Procedures
20-41-01	Decoding Table for Boeing Finish Codes
20-41-02	Application of Chemical and Solvent Resistant Finishes
20-43-01	Chromic Acid Anodizing
20-60-02	Finishing Materials
20-60-04	Miscellaneous Materials

3. Materials

NOTE: Equivalent substitutes may be used.

- A. Primer -- BMS 10-11 type 1 (Ref 20-60-02)
- B. Sealant -- BMS 5-95 type 1 (Ref 20-60-04)
- C. Enamel -- BMS 10-60 type 2, BAC 707 gray gloss (Ref 20-60-02)
- D. Primer -- BMS 10-79 type 3 (Ref 20-60-02)
- E. Surfacer -- Dexter 8-W-5 (Ref 20-60-02)
- F. Conditioner, static -- Dexter 28-C-1 (Ref 20-60-02)

54-52-10

REPAIR-GENERAL

01

Page 601

Jul 10/87

FITTING ASSEMBLY – REPAIR 1-1

313T2106-3

NOTE: Refer to REPAIR-GEN for list of applicable standard practices.

**1. Bushing Replacement** (205, IPL Fig. 1)

- A. Remove bushings.
- B. Check for damage and corrosion and repair as specified in procedure 2 if necessary.
- C. Install new bushings with wet BMS 5-95 sealant as specified in 20-50-03.
- D. Machine bushings as specified in Fig. 601.
- E. Fillet seal flanges with BMS 5-95 sealant.

**2. Repair**

- A. Repair holes for bushings (205, IPL Fig. 1).
  - (1) Machine the fitting (210, IPL Fig. 1) as specified in Fig. 601.
  - (2) Penetrant check as specified in 20-20-02.
  - (3) Shot peen the bores as specified in Fig. 601 and 20-10-03.
  - (4) Refinish as specified in procedure 3.A.

**3. Refinish**

- A. Fitting (210, IPL Fig. 1) -- Chromic acid anodize type 1, and apply one coat of BMS 10-11 type 1, primer (F-18.13) per 20-41-02. Omit primer from bushing holes. Material: Al alloy.

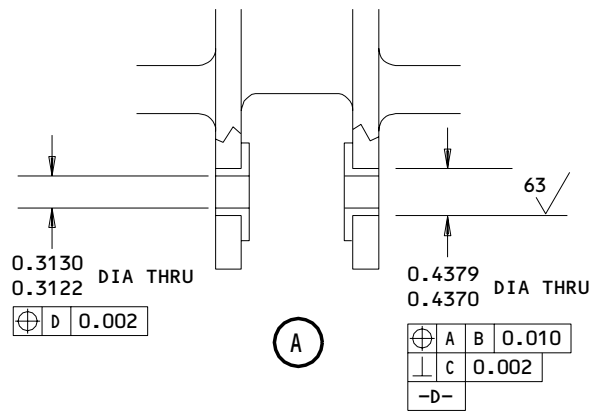
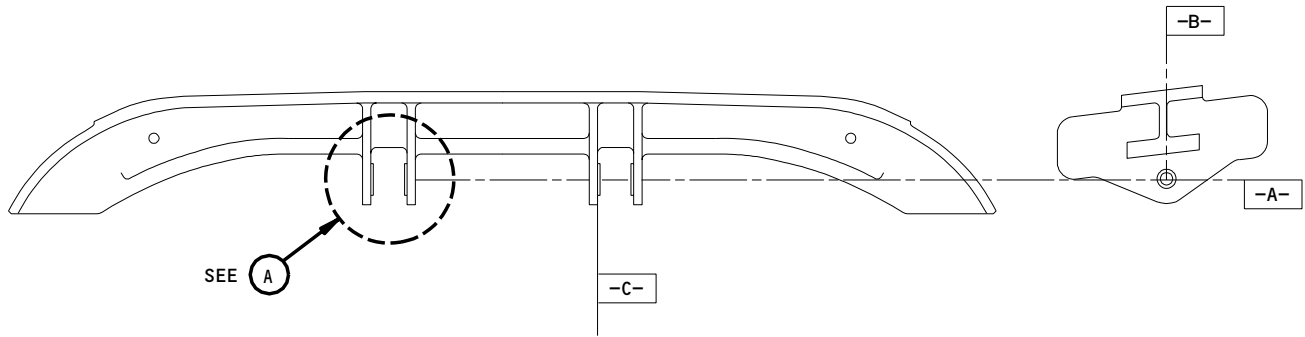
**54-52-10**

REPAIR 1-1

01.1

Page 601

Jan 01/92



**REPAIR**

SHOT PEEN AS SPECIFIED IN 20-10-03

SHOT NUMBER 230-250

INTENSITY 0.010A

COVERAGE 2.0

ALL DIMENSIONS ARE IN INCHES

313T2106-3  
 Fitting Assembly - Repair  
 Figure 601

**54-52-10**

REPAIR 1-1

Page 602

Jan 01/92

01.1

MISCELLANEOUS PART REFINISH – REPAIR 2-1

1. Repair of parts listed in Fig. 601 consists of restoration of the original finish.

IPL FIG. & ITEM	MATERIAL	FINISH
Fairing assembly (1)		Apply one coat of BMS 10-60 type 2, gloss enamel [(F-19.39-707 (gray)] on all exterior surfaces.
Retainer (65,70,75,80,85)	Al alloy	Chemical treat and apply one coat primer, BMS 10-11 type 1 per 20-41-02 (F-18.06).
Panel assembly (140)	Fiberglass/epoxy over honeycomb sandwich	Prepare surface and apply Dexter 28-C-1 Static Conditioner plus Epocast 156 or Dexter 8-W-5 Surfacer per 20-10-06, except for peel ply fabricated parts 28-C-1 and Epocast 156 or 8-W-5 may be omitted (SRF-14.672).  Apply one coat BMS 10-79 type 3 primer (F-19.47).
Doubler (285, 290)	15-5PH CRES HT TR 180-200 KSI	Finish the abrade exterior surface as specified in 20-30-03. Then apply primer (F-19-47).
Nut (305)	15-5PH CRES HT TR 180-200 KSI	Prepare surface and passivate as specified in 20-30-03, method 2.

Refinish Details  
Figure 601

**54-52-10**

REPAIR 2-1

01.1

Page 601

Jan 01/92



ASSEMBLY1. Materials

NOTE: Equivalent substitutes may be used.

A. Sealant, silicone -- DC-93-006 (Ref 20-60-04)

B. Lubricant -- BMS 3-8, Class A (Ref 20-50-08)

2. Assembly

A. Use standard industry practices for assembly of this component, and the following additional procedures.

B. Assemble fitting assembly (150).

(1) Install bolt (185) and nut (195).

(2) Tighten nut (195) to 5-10 pound-inches.

(3) Install cotter pin (180).

(4) Apply Dow Corning 93-006 silicone sealant to end of bolt (185) and nut (195) approximately 0.06 thick.

C. Assemble plug assembly (295).

(1) Install the hook (320) to the pre-assembled end of the cable assembly (325).

(2) Loop the free end of the cable assembly (325) thru the sleeve (315), around the plug assembly and back thru the sleeve.

(3) Crimp the sleeve (315).

3. Storage

A. Prepare and store unit per standard industry practices.

**54-52-10**ASSEMBLY  
Page 701  
Jan 01/92

01.1



FITS AND CLEARANCES

1. Torque nut (195) to 5-10 pound-inches.

**54-52-10**

FITS AND CLEARANCES

01

Page 801

Jul 10/87

ILLUSTRATED PARTS LIST

1. This section lists and illustrates replaceable or repairable component parts. The Illustrated Parts Catalog contains a complete explanation of the Boeing part numbering system.

2. Indentures show parts relationships as follows:

Assembly

Detail Parts for Assembly

Subassembly

Attaching Parts for Subassembly

Detail Parts for Subassembly

Detail Installation Parts (Included only if installation parts may be returned to shop as part of assembly)

3. One use code letter (A, B, C, etc.) is assigned in the EFF CODE column for each variation of top assembly. All listed parts are used on all top assemblies except when limitations are shown by use code letter opposite individual part entries.

4. Letter suffixes (alpha-variants) are added to item numbers for optional parts, Service Bulletin modification parts, configuration differences (Except left- and right-hand parts), product improvement parts, and parts added between two sequential item numbers. The alpha-variant is not shown on illustrations when appearance and location of all variants of the part is the same.

5. Service Bulletin modifications are shown by the notations PRE SB XXXX and POST SB XXXX.

A. When a new top assembly part number is assigned by Service Bulletin, the notations appear at the top assembly level only. The configuration differences at detail part level are then shown by use code letter.

B. When the top assembly part number is not changed by the Service Bulletin, the notations appear at the detail part level.

6. Parts Interchangeability

Optional  
(OPT)

The parts are optional to and interchangeable with other parts having the same item number.

Supersedes, Superseded By  
(SUPSDS, SUPSD BY)

The part supersedes and is not interchangeable with the original part.

Replaces, Replaced By  
(REPLS, REPLD BY)

The part replaces and is interchangeable with, or is an alternate to, the original part.

**54-52-10**

ILLUSTRATED PARTS LIST

01 Page 1001

Jul 10/87

VENDORS

- 06710 LAMSON AND SESSIONS CO THE VALLEY-TODECO  
12975 BRADLEY AVENUE  
SYLMAR, CALIFORNIA 91342-3830  
FORMERLY VALLEY BOLT CORP VB0097 IN NORTH HOLLYWOOD, CA
- 06725 AIR INDUSTRIES CORPORATION  
12570 KNOTT STREET  
GARDEN GROVE, CALIFORNIA 92641-3932  
FORMERLY AIR INDUSTRIES OF CALIF IN GARDENA, CALIF.
- 06950 SCREWCORP VSI CORP AEROSPACE PRODUCTS DIV FAIRCHILD IND INC  
13001 EAST TEMPLE AVE. PO BOX 730  
CITY OF INDUSTRY, CALIFORNIA 91746-1417  
FORMERLY SCREW CORP, VB0096 AND VSI CORP SCREWCORP DIV  
FORMERLY IN CULVER CITY, CALIFORNIA
- 08524 DEUTSCH FASTENER CORP SEE CODE V97928
- 10630 ANILLO INDUSTRIES, INCORPORATED  
2090 NORTH GLASSELL  
ORANGE, CALIFORNIA 92667  
FORMERLY WESTERN WASHER DIV OF SENG CO V87487
- 11815 CHERRY AEROSPACE FASTENERS DIV OF TEXTRON  
1224 EAST WARNER AVENUE PO BOX 2157  
SANTA ANA, CALIFORNIA 92707  
FORMERLY IN LOS ANGELES, CALIF , FORMERLY CHERRY FASTENERS  
TOWNSEND DIV OF TEXTRON INC V71087
- 15653 KAYNAR MICRODOT AEROSPACE FASTENING SYSTEM  
800 SOUTH COLLEGE BLVD PO BOX 3001  
FULLERTON, CALIFORNIA 92634-3001  
FORMERLY MICRODOT AEROSPACE FASTENING SYS DIV OF MICRODOT  
INC IN PICO RIVERA, CALIFORNIA
- 17943 FEDERAL MANUFACTURING CORPORATION  
6910 FARMDALE AVENUE  
NORTH HOLLYWOOD, CALIFORNIA 91605-6210  
FORMERLY VB0098
- 27624 PAUL R BRILES INC P.B. FASTENER DIV  
1700 WEST 132ND STREET PO BOX 1157  
GARDENA, CALIFORNIA 90249-2008  
FORMERLY P.B. FASTENER DIV OF PAUL BRILLES INC

54-52-10

ILLUSTRATED PARTS LIST  
01.101 Page 1002  
Apr 01/92

**BOEING**  
COMPONENT  
MAINTENANCE MANUALVENDORS

52828 REPUBLIC FASTENER MFG CORP  
1300 RANCHO CONEJO BLVD  
NEWBURY PARK, CALIFORNIA 91320-1405  
FORMERLY IN SYLMAR, CALIFORNIA

56878 SPS TECHNOLOGIES INC AEROSPACE AND INDUSTRIAL PRODUCTS DIV  
HIGHLAND AVENUE  
JENKINTOWN, PENNSYLVANIA 19046  
USE APPLICABLE FACILITY CODE  
FORMERLY STANDARD PRESSED STEEL

71087 BOOTS ACFT NUT DIV TOWNSEND CO SEE TEXTRON INC CHERRY  
FASTENER TOWNSEND DIV V11815

72962 ELASTIC STOP NUT A DIV OF HARTFORD INDUSTRIES INC  
2330 VAUXHALL ROAD  
UNION, NEW JERSEY 07083-5038  
FORMERLY AMERACE CORP ESNA DIV

73197 HI-SHEAR TECHNOLOGY CORP  
2600 SKYPARK DRIVE  
TORRANCE, CALIFORNIA 90509

73439 AMSCO PRODUCTS CAMCAR DIV TEXTRON INC  
345 EAST MARSHALL STREET  
WYTHEVILLE, VIRGINIA 24382-3917  
FORMERLY AMERICAN SCREW CO IN WILLIMANTIC, CONNECTICUT  
FORMERLY TEXTRON INC CAMCAR DIV AMERICAN SCREW CO

78189 ILLINOIS TOOL WORKS INC SHAKEPROOF DIVN  
ST CHARLES ROAD  
ELGIN, ILLINOIS 60120  
FORMERLY SHAKEPROOF DIVN OF ILLINOIS TOOL WORKS B0025  
FORMERLY SHAKEPROOF LOCK WASHER CO V77900

**54-52-10**ILLUSTRATED PARTS LIST  
01.101 Page 1003  
Apr 01/92

VENDORS

- 80539 SPS TECHNOLOGIES INC AEROSPACE PRODUCTS DIV  
2701 SOUTH HARBOR BOULEVARD PO BOX 1259  
SANTA ANA, CALIFORNIA 92702-1259  
FORMERLY NUTT-SHEL DIV OF SPC WESTERN CO V80539 AND STANDARD  
PRESSED STEEL WESTERN DIV V17279
- 83014 HARTWELL CORPORATION  
900 SOUTH RICHFIELD ROAD  
PLACENTIA, CALIFORNIA 92670-6732  
FORMERLY V0532B IN LOS ANGELES, CALIFORNIA
- 84256 AVIBANK MANUFACTURING COMPANY  
210 SOUTH VICTORY BLVD PO BOX 391  
BURBANK, CALIFORNIA 91503  
FORMERLY AVDEL INC AND ROWE SALES CO VB0001  
FORMERLY PRICE, D.W. CORP LOS ANGELES, CALIFORNIA V97978
- 92215 VOI-SHAN DIV OF VSI CORP SUB OF FAIRCHILD INDUSTRIAL INC  
8463 HIGUERA STREET  
CULVER CITY, CALIFORNIA 90230
- 92595 AUTOMATIC SCREW MACHINE PRODUCTS CO  
PO BOX 1608 709 2ND AVENUE SE  
DECATUR, ALABAMA 35602
- 93907 TEXTRON INC CAMCAR DIV  
600 18TH AVENUE  
ROCKFORD, ILLINOIS 61101
- 97928 DEUTSCH FASTENER CORP  
3969 PARAMONT BOULEVARD  
LAKEWOOD, CALIFORNIA 90712-4193  
FORMERLY DUMONT AVIATION ASSOC IN LONG BEACH, CALIFORNIA  
FORMERLY LITTON FASTENING SYSTEMS DIV OF LITTON SYSTEMS INC

54-52-10

ILLUSTRATED PARTS LIST  
01.101 Page 1004  
Apr 01/92



VENDORS

99862 CARR LANE MANUFACTURING COMPANY  
4200 CARR LANE CT  
ST. LOUIS, MISSOURI 63119-2129

54-52-10

ILLUSTRATED PARTS LIST

01.101 Page 1005

Apr 01/92

PART NUMBER	AIRLINE PART NO.	FIG.	ITEM	TTL REQ
AN960PD716		1	220	2
BACB28AA5B018		1	205	4
BACB28Z5G080		1	200	2
BACB30BL6		1	214	4
		1	280A	6
BACB30LH2-3		1	110	16
BACB30LH2-7		1	115	4
BACB30MY6K3		1	170	4
BACB30MY6K4		1	160	4
BACB30MY6K5		1	155	32
BACB30NM4DK21		1	260	2
BACB30NN3K4		1	50	19
BACB30NW5K6		1	235	8
BACB30NW6K3		1	275A	6
BACB30NW6K4		1	17B	2
BACB30NW6K5		1	27B	2
BACB30NY6K3		1	15	270
		1	17	2
BACB30NY6K4		1	25	43
		1	26A	2
		1	27	2
BACB30NY6K5		1	20	6
BACB30NY6K7		1	30	20
BACB30VT6K2		1	212	4
BACB30VU6K3		1	275B	6
BACC13Y3B120		1	325	2
BACC30M5		1	240	8
BACC30M6		1	35	343
		1	165	4
		1	280	4
BACN10JC3CD		1	40	2
		1	157	32
		1	175	4
BACN10JD104		1	265	2
BACN10JD5ASU		1	195	2
BACN10JN08CD		1	125	20
BACN10JN3		1	60	19
BACR15BA3AD		1	55	38
BACR15BA6AD		1	130	22
BACS12N8-8		1	300	2
BACS40R025B015		1	53	1
BACW10UB10		1	135	22
BACW10UC81P		1	120	20

54-52-10

 ILLUSTRATED PARTS LIST  
 01.101 Page 1006  
 Apr 01/92




**BOEING**  
 COMPONENT  
 MAINTENANCE MANUAL

PART NUMBER	AIRLINE PART NO.	FIG.	ITEM	TTL REQ
BRFM20A3		1	60	19
BRFM20C08D		1	125	20
BRH10C3D		1	40	2
		1	157	32
		1	175	4
B30MY6K3		1	170	4
B30MY6K4		1	160	4
B30MY6K5		1	155	32
B30NW5K6		1	235	8
B30NW6K3		1	275A	6
B30NW6K4		1	17B	2
B30NW6K5		1	27B	2
CA3105-832-8		1	300	2
HL10VAZ6-3		1	170	4
HL10VAZ6-4		1	160	4
HL10VAZ6-5		1	155	32
HL10VAZ6K3		1	170	4
HL11VAZ5-6		1	235	8
HL11VAZ6-3		1	275A	6
HL11VAZ6-4		1	17B	2
HL11VAZ6-5		1	27B	2
HL11V3		1	275A	6
HL11V4		1	17B	2
HL11V5		1	27B	2
HL11V6		1	235	8
HL11V6-4		1	17B	2
HL11V6-5		1	27B	2
HL13VAZ6-3		1	15	270
		1	17	2
HL13VAZ6-4		1	25	43
		1	26A	2
		1	27	2
HL13VAZ6-5		1	20	6
HL13VAZ6-7		1	30	20
HL13V3		1	15	270
		1	17	2
HL13V4		1	25	43
		1	26A	2
		1	27	2
HL13V5		1	20	6
HL13V7		1	30	20
HL70-5		1	240	8
HL79-6		1	35	343
		1	165	4
		1	280	4

54-52-10

 ILLUSTRATED PARTS LIST  
 01.101 Page 1007  
 Apr 01/92

PART NUMBER	AIRLINE PART NO.	FIG.	ITEM	TTL REQ
HST106K2		1	212	4
HST11AG6-3		1	275B	6
H51650-3BAC		1	40	2
		1	157	32
		1	175	4
L8006K3		1	170	4
L8006K4		1	160	4
L8006K5		1	155	32
L801-6K3		1	15	270
		1	17	2
L801-6K4		1	25	43
		1	26A	2
		1	27	2
L801-6K5		1	20	6
L801-6K7		1	30	20
L803-5K6		1	235	8
L803-6-4		1	17B	2
L803-6-5		1	27B	2
L803-6K3		1	275A	6
L803-6K4		1	17B	2
L803-6K5		1	27B	2
MF1000-3BAC		1	60	19
MF51637-08		1	125	20
MF53049-3		1	60	19
MF53050-8CD		1	125	20
MS20427M6C8		1	22	2
MS24665-134		1	255	2
MS24665-153		1	180	2
MS29523-1		1	320	2
		1	330	2
MS51844-82		1	315	2
NAS1805-7		1	230	2
NAS6705DE25		1	185	2
NS103218-02		1	60	19
NS202486-02		1	40	2
		1	157	32
		1	175	4
NS202487-82		1	125	20
RMF9201M3		1	60	19
T6C1032CD		1	40	2
		1	157	32
		1	175	4
T8124S3S		1	60	19
T8301C832CD		1	125	20
VL106K2		1	212	4
VN252A02		1	60	19
10-60401-7		1	270	2

54-52-10

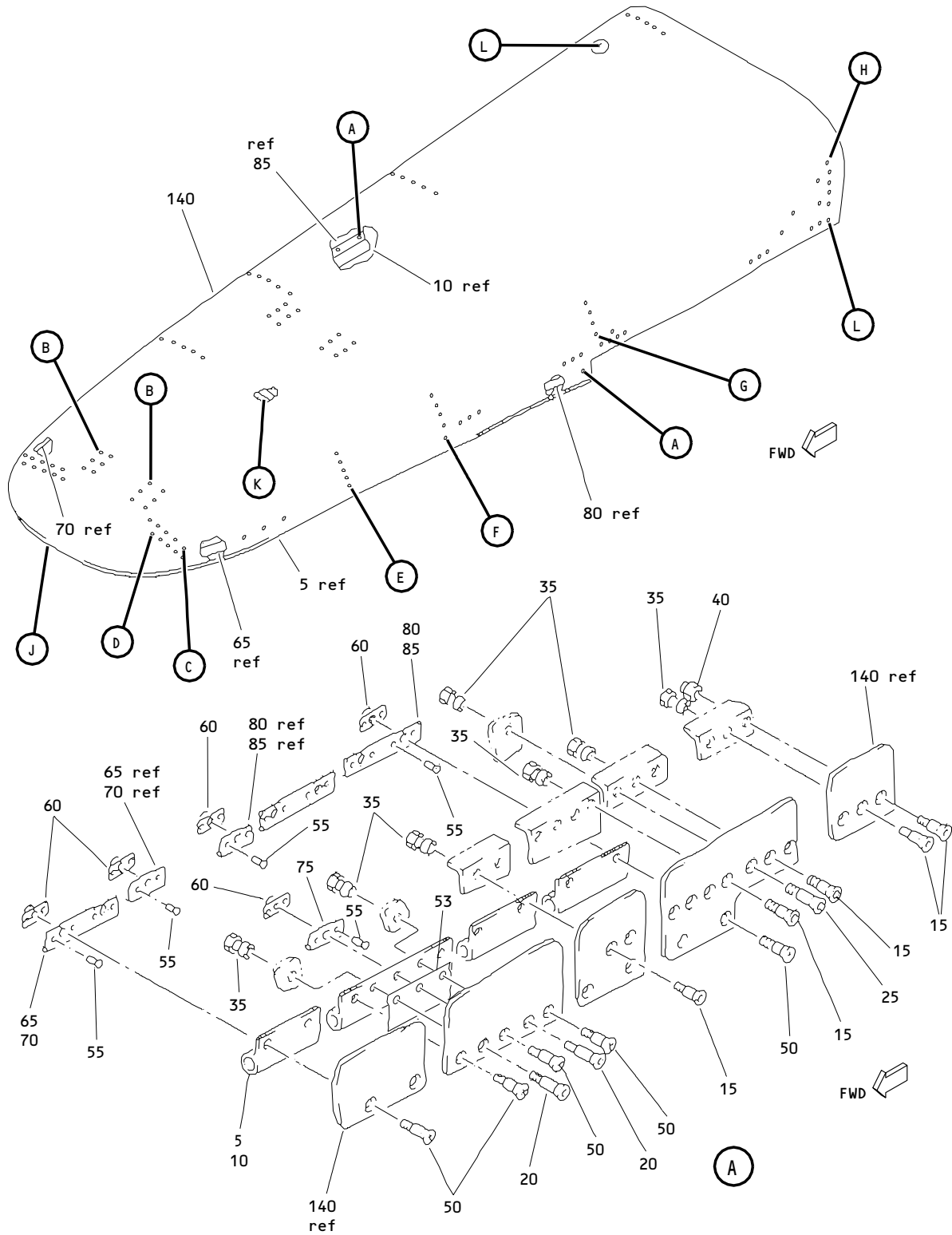
 ILLUSTRATED PARTS LIST  
 01.101 Page 1008  
 Apr 01/92


**BOEING**  
 COMPONENT  
 MAINTENANCE MANUAL

PART NUMBER	AIRLINE PART NO.	FIG.	ITEM	TTL REQ
102F9201M82		1	125	20
102LH3W		1	40	2
		1	157	32
		1	175	4
313T1108-1		1	295	2
313T1108-2		1	310	2
313T1108-3		1	305	2
313T2100-111		1	285	1
313T2100-112		1	290	1
313T2100-113		1	1A	RF
313T2100-121		1	1B	RF
313T2100-2		1	1	RF
313T2100-46		1	250	2
313T2100-53		1	5	1
313T2100-54		1	10	1
313T2100-72		1	75	2
313T2100-73		1	65	1
313T2100-74		1	70	1
313T2100-75		1	80	1
313T2100-76		1	85	1
313T2101-3		1	140	1
313T2102-2		1	145	1
313T2102-3		1	145A	1
313T2103-1		1	340A	1
313T2103-2		1	345A	1
313T2103-3		1	340	1
313T2103-4		1	345	1
313T2106-3		1	150	1
313T2106-4		1	210	1
313T3115-1		1	245	2
313T3116-1		1	225	2
		1	165	4
		1	280	4
69B91056-600		1	215	2

54-52-10

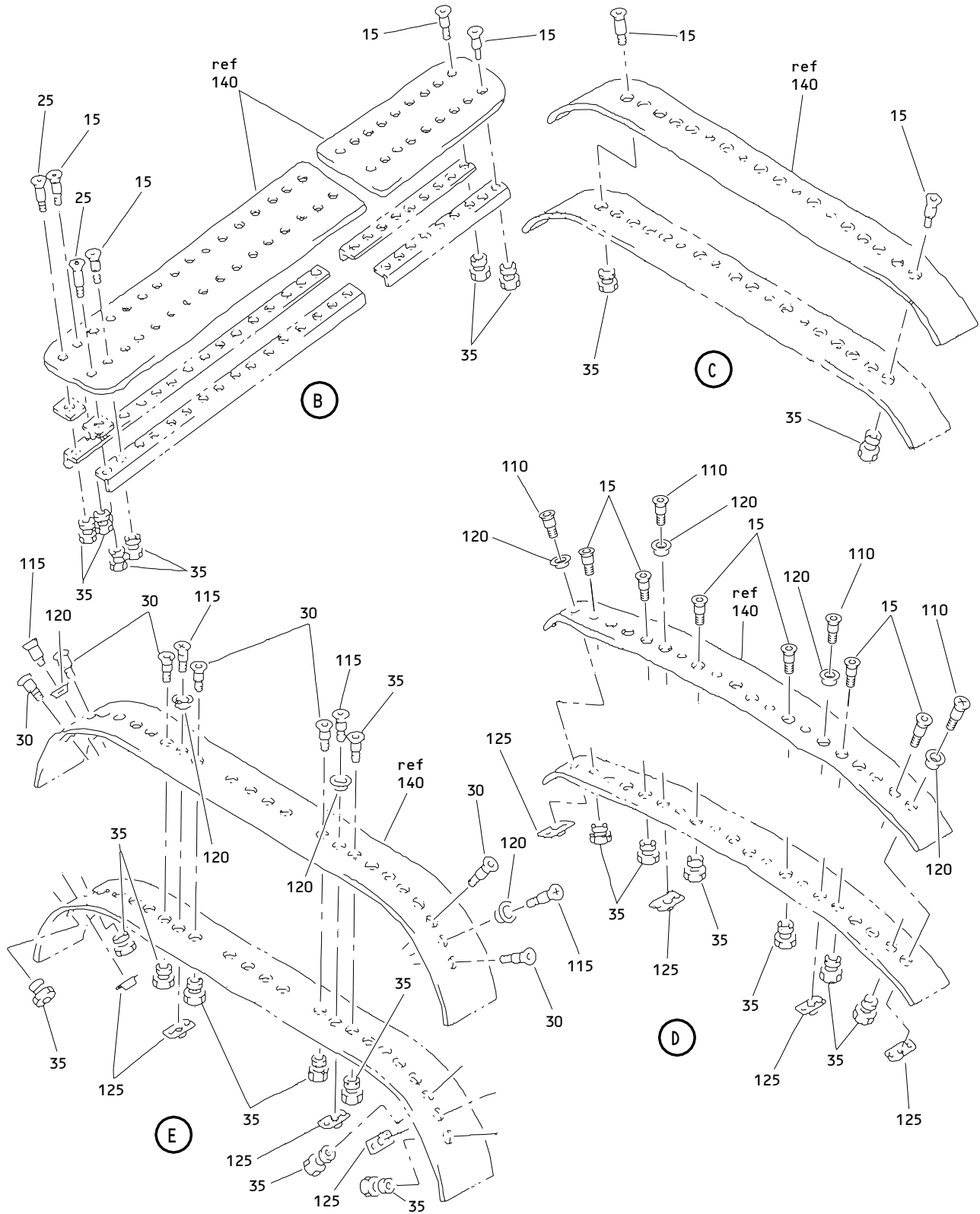
 ILLUSTRATED PARTS LIST  
 01.101 Page 1009  
 Apr 01/92



CF6-80C Strut Forward Fairing Assembly  
Figure 1 (Sheet 1)

**54-52-10**

ILLUSTRATED PARTS LIST  
01.1 Page 1011  
Apr 01/92



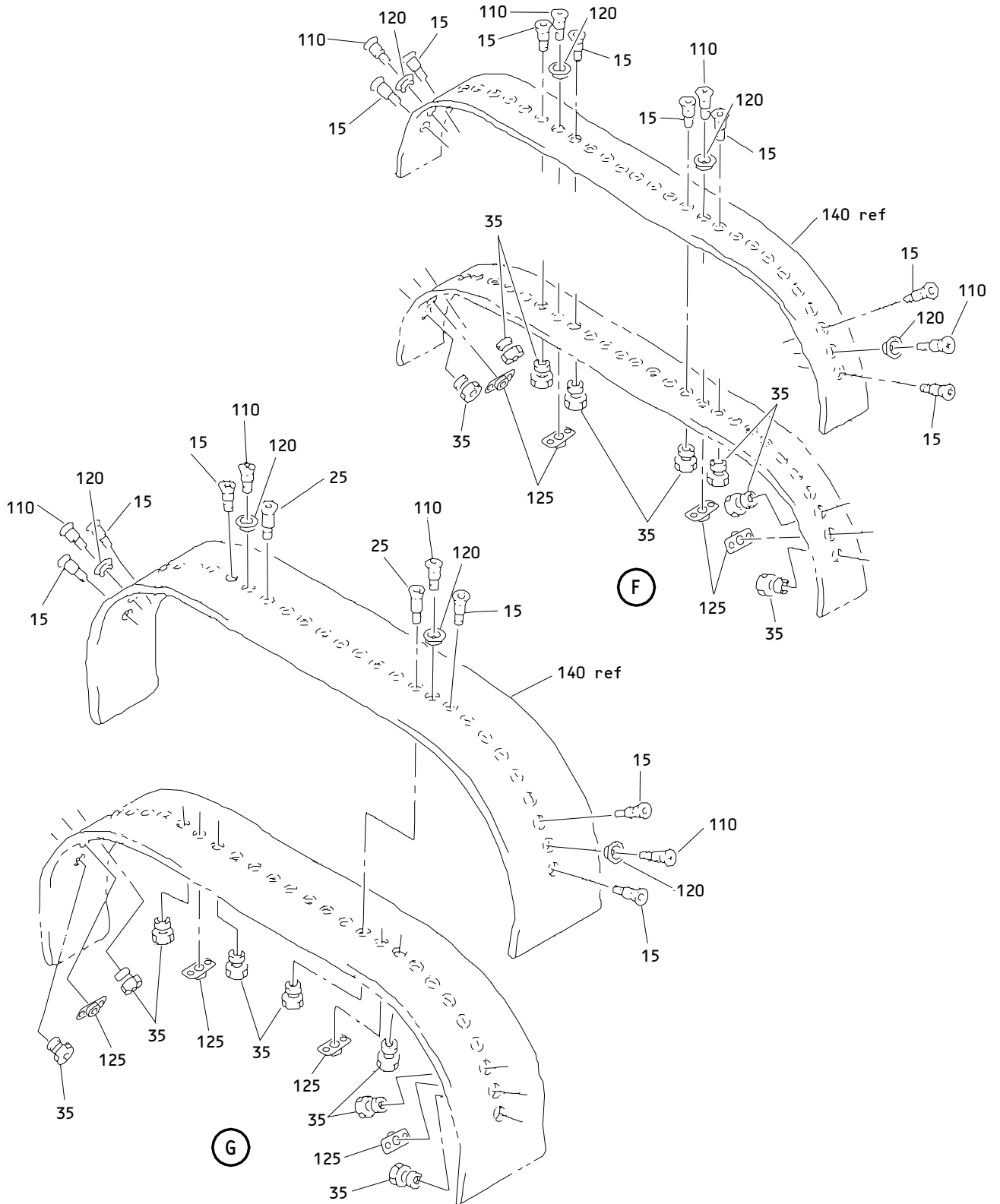
CF6-80C Strut Forward Fairing Assembly  
Figure 1 (Sheet 2)

**54-52-10**

ILLUSTRATED PARTS LIST  
01.1 Page 1012  
Apr 01/92

# BOEING

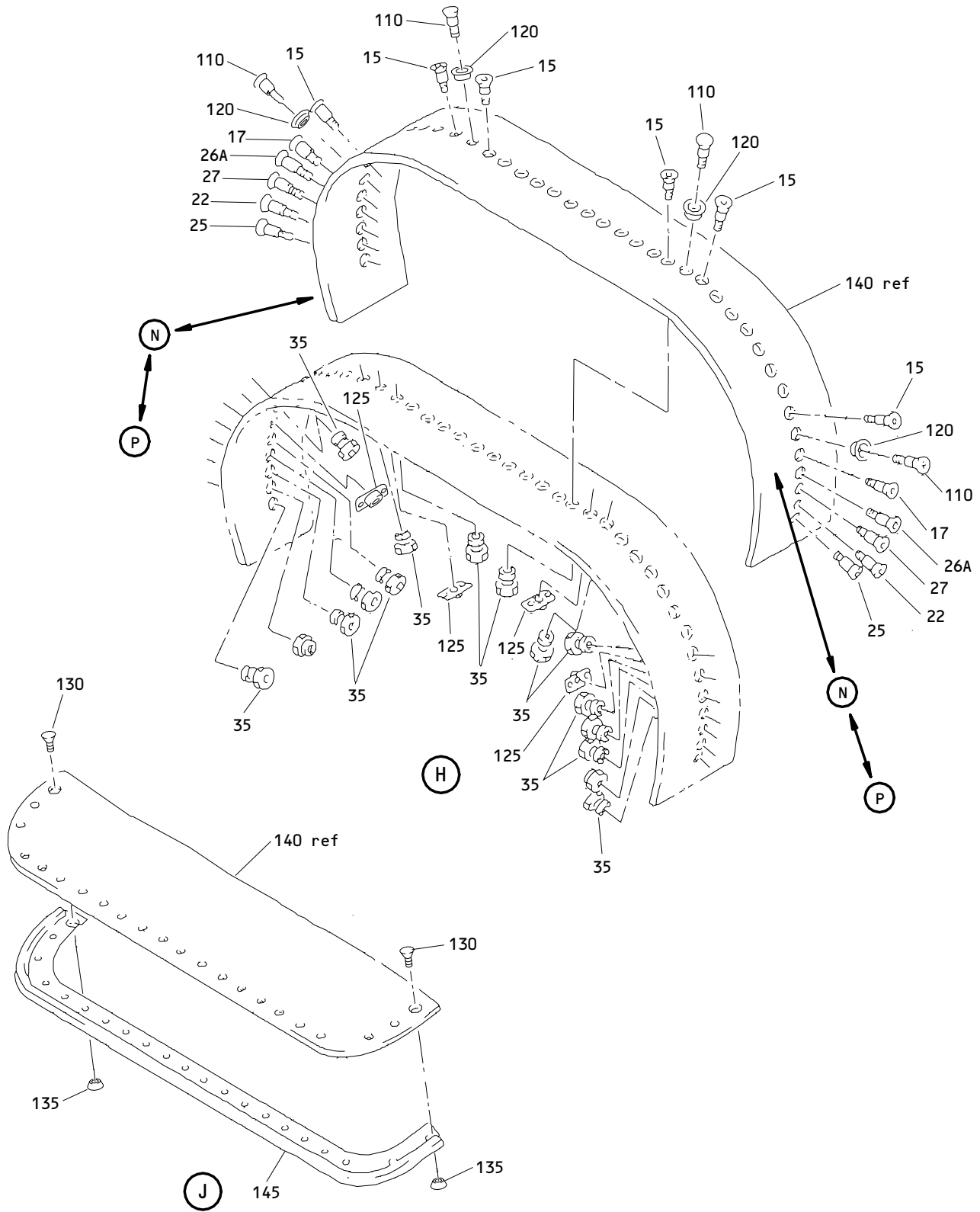
COMPONENT  
MAINTENANCE MANUAL



CF6-80C Strut Forward Fairing Assembly  
Figure 1 (Sheet 3)

54-52-10

ILLUSTRATED PARTS LIST  
01.1 Page 1013  
Apr 01/92

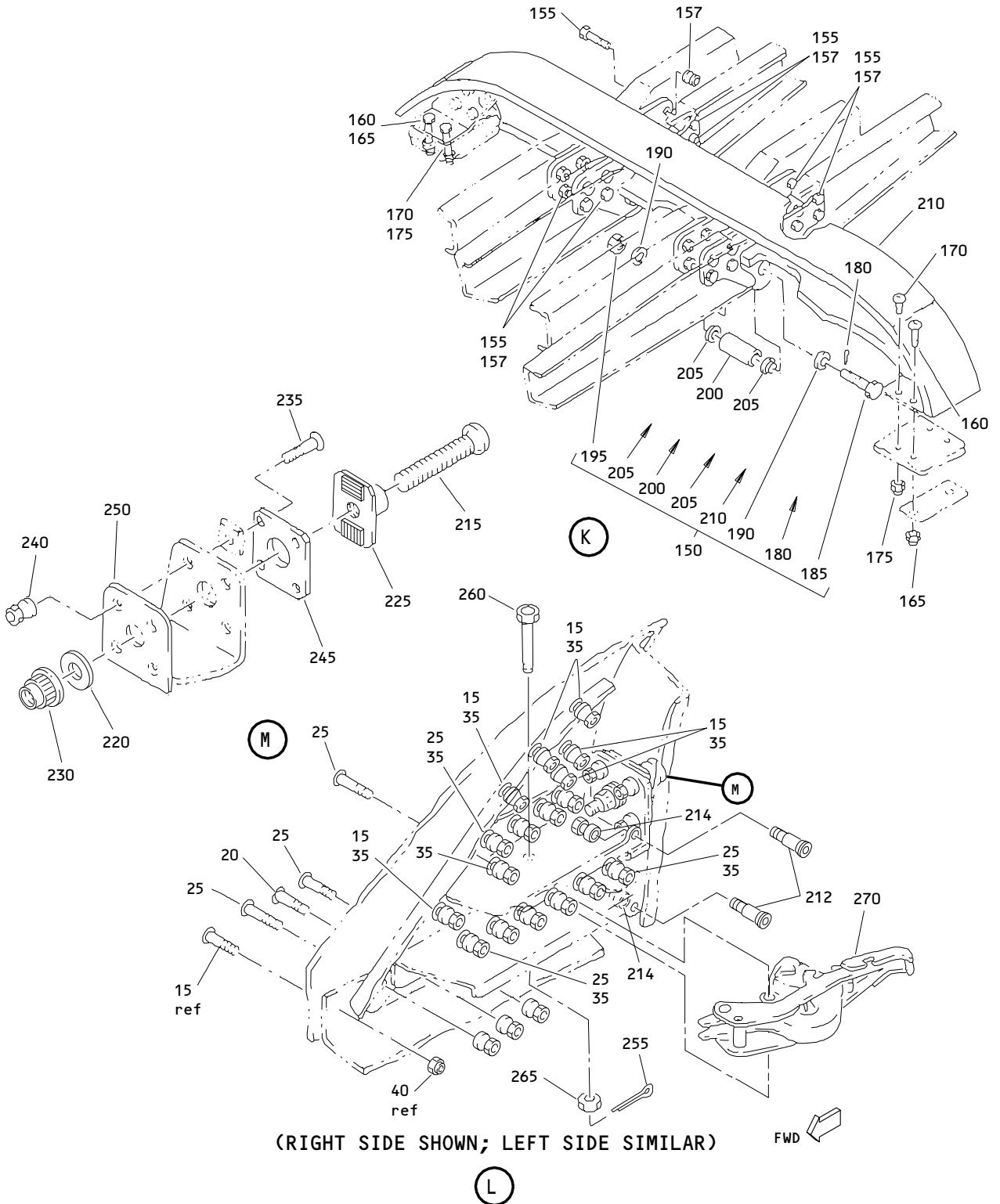


CF6-80C Strut Forward Fairing Assembly  
 Figure 1 (Sheet 4)

**54-52-10**

ILLUSTRATED PARTS LIST  
 01.1 Page 1014  
 Apr 01/92

**BOEING**  
**COMPONENT**  
**MAINTENANCE MANUAL**

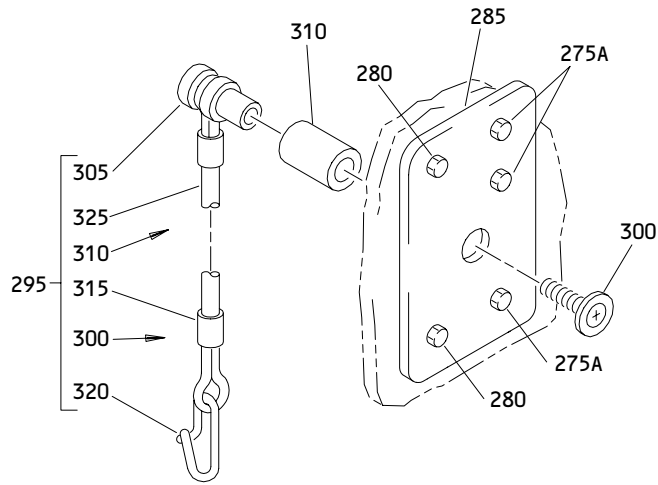


CF6-80C Strut Forward Fairing Assembly  
 Figure 1 (Sheet 5)

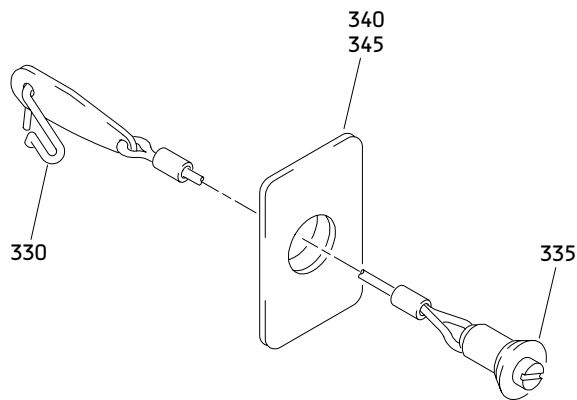
**54-52-10**

ILLUSTRATED PARTS LIST  
 01.1 Page 1015  
 Apr 01/92





(N)



(P)

CFG-80C Strut Forward Fairing Assembly  
 Figure 1 (Sheet 6)

**54-52-10**

ILLUSTRATED PARTS LIST  
 01.1 Page 1016  
 Apr 01/92

**BOEING**  
 COMPONENT  
 MAINTENANCE MANUAL

FIG. & ITEM	PART NO.	AIRLINE PART NUMBER	NOMENCLATURE 1234567	EFF CODE	QTY PER ASSY
01- -1	313T2100-2		FAIRING ASSY-CF6-80C STRUT FWD	A	RF
-1A	313T2100-113		FAIRING ASSY-CF6-80C STRUT FWD	B	RF
-1B	313T2100-121		FAIRING ASSY-CF6-80C STRUT FWD	C	RF
5	313T2100-53		.SEAL- (MFD FROM RUBBER EXTR 10-60754-86 X 48.0 IN.)		1
10	313T2100-54		.SEAL- (MFD FROM RUBBER EXTR 10-60754-86 X 48.0 IN.)		1
15	HL13VAZ6-3		.BOLT- (V56878) (SPEC BACB30NY6K3) (OPT HL13VAZ6-3 (V73197)) (OPT HL13VAZ6-3 (V92215)) (OPT HL13VAZ6-3 (V97928)) (OPT L801-6K3 (V06725)) (OPT HL13VAZ6-3 (V08524)) (OPT HL13V3 (V06725))		270
17	HL13VAZ6-3		.BOLT- (V56878) (SPEC BACB30NY6K3) (OPT HL13VAZ6-3 (V73197)) (OPT HL13VAZ6-3 (V92215)) (OPT HL13VAZ6-3 (V97928)) (OPT L801-6K3 (V06725)) (OPT HL13VAZ6-3 (V08524)) (OPT HL13V3 (V06725))	A	2
-17A	HL13VAZ6-4		DELETED		

**54-52-10**

ILLUSTRATED PARTS LIST  
 01.101 Page 1017  
 Apr 01/92

FIG. & ITEM	PART NO.	AIRLINE PART NUMBER	NOMENCLATURE 1234567	EFF CODE	QTY PER ASSY
01- -17B	HL11VAZ6-4		.BOLT- (V56878) (SPEC BACB30NW6K4) (OPT HL11V6-4 (V92215)) (OPT HL11V6-4 (V97928)) (OPT L803-6-4 (V06725)) (OPT B30NW6K4 (V97928)) (OPT HL11VAZ6-4 (V73197)) (OPT HL11VAZ6-4 (V92215)) (OPT HL11VAZ6-4 (V97928)) (OPT L803-6K4 (V06725)) (OPT HL11V6-4 (V80539)) (OPT HL11VAZ6-4 (V08524)) (OPT HL11V4 (V06725))	B,C	2
20	HL13VAZ6-5		.BOLT- (V56878) (SPEC BACB30NY6K5) (OPT HL13VAZ6-5 (V73197)) (OPT HL13VAZ6-5 (V92215)) (OPT HL13VAZ6-5 (V97928)) (OPT L801-6K5 (V06725)) (OPT HL13VAZ6-5 (V08524)) (OPT HL13V5 (V06725))		6
22	MS20427M6C8		.RIVET		2

# 54-52-10

 ILLUSTRATED PARTS LIST  
 01.101 Page 1018  
 Apr 01/92


**BOEING**  
 COMPONENT  
 MAINTENANCE MANUAL

FIG. & ITEM	PART NO.	AIRLINE PART NUMBER	NOMENCLATURE 1234567	EFF CODE	QTY PER ASSY
01-25	HL13VAZ6-4		.BOLT- (V56878) (SPEC BACB30NY6K4) (OPT HL13VAZ6-4 (V73197)) (OPT HL13VAZ6-4 (V92215)) (OPT HL13VAZ6-4 (V97928)) (OPT L801-6K4 (V06725)) (OPT HL13VAZ6-4 (V08524)) (OPT HL13V4 (V06725))		43
26A	HL13VAZ6-4		.BOLT- (V56878) (SPEC BACB30NY6K4) (OPT HL13VAZ6-4 (V73197)) (OPT HL13VAZ6-4 (V92215)) (OPT HL13VAZ6-4 (V97928)) (OPT L801-6K4 (V06725)) (OPT HL13VAZ6-4 (V08524)) (OPT HL13V4 (V06725))	A	2
27	HL13VAZ6-4		.BOLT- (V56878) (SPEC BACB30NY6K4) (OPT HL13VAZ6-4 (V73197)) (OPT HL13VAZ6-4 (V92215)) (OPT HL13VAZ6-4 (V97928)) (OPT L801-6K4 (V06725)) (OPT HL13VAZ6-4 (V08524)) (OPT HL13V4 (V06725))	A	2

54-52-10

 ILLUSTRATED PARTS LIST  
 01.101 Page 1019  
 Apr 01/92

FIG. & ITEM	PART NO.	AIRLINE PART NUMBER	NOMENCLATURE 1234567	EFF CODE	QTY PER ASSY
01- -27A -27B	HL13VAZ6-5 HL11VAZ6-5		DELETED .BOLT- (V56878) (SPEC BACB30NW6K5) (OPT HL11V6-5 (V92215)) (OPT HL11V6-5 (V97928)) (OPT L803-6-5 (V06725)) (OPT B30NW6K5 (V97928)) (OPT HL11VAZ6-5 (V73197)) (OPT HL11VAZ6-5 (V92215)) (OPT HL11VAZ6-5 (V97928)) (OPT L803-6K5 (V06725)) (OPT HL11V6-5 (V80539)) (OPT HL11VAZ6-5 (V08524)) (OPT HL11V5 (V06725))	B,C	2
30	HL13VAZ6-7		.BOLT- (V56878) (SPEC BACB30NY6K7) (OPT HL13VAZ6-7 (V73197)) (OPT HL13VAZ6-7 (V92215)) (OPT HL13VAZ6-7 (V97928)) (OPT L801-6K7 (V06725)) (OPT HL13VAZ6-7 (V08524)) (OPT HL13V7 (V06725))		20

54-52-10

 ILLUSTRATED PARTS LIST  
 01.101 Page 1020  
 Apr 01/92


**BOEING**  
 COMPONENT  
 MAINTENANCE MANUAL

FIG. & ITEM	PART NO.	AIRLINE PART NUMBER	NOMENCLATURE 1234567	EFF CODE	QTY PER ASSY
01-35	HL79-6		.COLLAR- (V56878) (SPEC BACC30M6) (OPT HL79-6 (V73197)) (OPT HL79-6 (V92215)) (OPT 66014-6 (V56878))		343
40	BRH10C3D		.NUT- (V52828) (SPEC BACN10JC3CD) (OPT H51650-3BAC (V15653)) (OPT 102LH3W (V72962)) (OPT NS202486-02 (V80539)) (OPT T6C1032CD (V11815))		2
45 50	H01-3BAC BACB30NN3K4		DELETED .BOLT- (V06710) (SPEC BACB30NN3K4) (OPT BACB30NN3K4 (V06725)) (OPT BACB30NN3K4 (V06950)) (OPT BACB30NN3K4 (V08524)) (OPT BACB30NN3K4 (V27624)) (OPT BACB30NN3K4 (V56878)) (OPT BACB30NN3K4 (V73197)) (OPT BACB30NN3K4 (V80539)) (OPT BACB30NN3K4 (V92215)) (OPT BACB30NN3K4 (V93907)) (OPT BACB30NN3K4 (V97928))		19

54-52-10

 ILLUSTRATED PARTS LIST  
 01.101 Page 1021  
 Apr 01/92

FIG. & ITEM	PART NO.	AIRLINE PART NUMBER	NOMENCLATURE 1234567	EFF CODE	QTY PER ASSY
01-					
53	BACS40R025B015		.SHIM		1
55	BACR15BA3AD		.RIVET- (SIZE DETERMINE ON INST)		38
60	T8124S3S		.NUTPLATE- (V71087) (SPEC BACN10JN3) (OPT BRFM20A3 (V52828)) (OPT MF1000-3BAC (V15653)) (OPT NS103218-02 (V80539)) (OPT RMF9201M3 (V72962)) (OPT VN252A02 (V92215)) (OPT MF53049-3 (V15653))		19
65	313T2100-73		.RETAINER ASSY		1
70	313T2100-74		.RETAINER ASSY		1
75	313T2100-72		.RETAINER ASSY		2
80	313T2100-75		.RETAINER ASSY		1
85	313T2100-76		.RETAINER ASSY		1

# 54-52-10

 ILLUSTRATED PARTS LIST  
 01.101 Page 1022  
 Apr 01/92

**BOEING**  
 COMPONENT  
 MAINTENANCE MANUAL

FIG. & ITEM	PART NO.	AIRLINE PART NUMBER	NOMENCLATURE 1234567	EFF CODE	QTY PER ASSY
01- 90 95 100 105 110	BACB30NN3K2 NAS43DD3-3 AN96OKD10 H10-3BAC BACB30LH2-3		DELETED DELETED DELETED DELETED .BOLT- (V06710) (SPEC BACB30LH2-3) (OPT BACB30LH2-3 (V06725)) (OPT BACB30LH2-3 (V06950)) (OPT BACB30LH2-3 (V08524)) (OPT BACB30LH2-3 (V17943)) (OPT BACB30LH2-3 (V27624)) (OPT BACB30LH2-3 (V80539)) (OPT BACB30LH2-3 (V92215)) (OPT BACB30LH2-3 (V97928))		16
115	BACB30LH2-7		.BOLT- (V06710) (SPEC BACB30LH2-7) (OPT BACB30LH2-7 (V06725)) (OPT BACB30LH2-7 (V06950)) (OPT BACB30LH2-7 (V08524)) (OPT BACB30LH2-7 (V17943)) (OPT BACB30LH2-7 (V27624)) (OPT BACB30LH2-7 (V80539)) (OPT BACB30LH2-7 (V92215)) (OPT BACB30LH2-7 (V97928))		4

54-52-10

ILLUSTRATED PARTS LIST  
 01.101 Page 1023  
 Apr 01/92



FIG. & ITEM	PART NO.	AIRLINE PART NUMBER	NOMENCLATURE 1234567	EFF CODE	QTY PER ASSY
01-120	BACW10UC81P		.WASHER		20
125	102F9201M82		.NUTPLATE- (V72962) (SPEC BACN10JN08CD) (OPT NS202487-82 (V80539)) (OPT BRFM20C08D (V52828)) (OPT MF51637-08 (V15653)) (OPT T8301C832CD (V11815)) (OPT MF53050-8CD (V15653))		20
130	BACR15BA6AD		.RIVET- (SIZE DETERMINE ON INST)		22
135	BACW10UB10		.WASHER- (V10630) (SPEC BACW10UB10)		22
140	313T2101-3		.PANEL ASSY		1
145	313T2102-2		.SEAL-NOSE (OPT ITEM 145A)		1
-145A	313T2102-3		.SEAL-NOSE (OPT ITEM 145)		1
150	313T2106-3		.FITTING ASSY-ATTACH ATTACHING PARTS		1
155	HL10VAZ6-5		.BOLT- (V56878) (SPEC BACB30MY6K5) (OPT B30MY6K5 (V97928)) (OPT HL10VAZ6-5 (V73197)) (OPT HL10VAZ6-5 (V92215)) (OPT HL10VAZ6-5 (V97928)) (OPT L8006K5 (V06725)) (OPT HL10VAZ6-5 (V08524))		32

54-52-10

 ILLUSTRATED PARTS LIST  
 01.101 Page 1024  
 Apr 01/92


**BOEING**  
 COMPONENT  
 MAINTENANCE MANUAL

FIG. & ITEM	PART NO.	AIRLINE PART NUMBER	NOMENCLATURE 1234567	EFF CODE	QTY PER ASSY
01-157	BRH10C3D		.NUT- (V52828) (SPEC BACN10JC3CD) (OPT H51650-3BAC (V15653)) (OPT 102LH3W (V72962)) (OPT NS202486-02 (V80539)) (OPT T6C1032CD (V11815))		32
160	HL10VAZ6-4		.BOLT- (V56878) (SPEC BACB30MY6K4) (OPT B30MY6K4 (V97928)) (OPT HL10VAZ6-4 (V73197)) (OPT HL10VAZ6-4 (V92215)) (OPT HL10VAZ6-4 (V97928)) (OPT L8006K4 (V06725)) (OPT HL10VAZ6-4 (V08524))		4
165	HL79-6		.COLLAR- (V56878) (SPEC BACC30M6) (OPT HL79-6 (V73197)) (OPT HL79-6 (V92215)) (OPT 66014-6 (V56878))		4

54-52-10

 ILLUSTRATED PARTS LIST  
 01.101 Page 1025  
 Apr 01/92

FIG. & ITEM	PART NO.	AIRLINE PART NUMBER	NOMENCLATURE 1234567	EFF CODE	QTY PER ASSY
01-170	HL10VAZ6K3		.BOLT- (V56878) (SPEC BACB30MY6K3) (OPT B30MY6K3 (V97928)) (OPT HL10VAZ6-3 (V73197)) (OPT HL10VAZ6-3 (V92215)) (OPT HL10VAZ6-3 (V97928)) (OPT L8006K3 (V06725)) (OPT HL10VAZ6-3 (V08524))		4
175	BRH10C3D		.NUT- (V52828) (SPEC BACN10JC3CD) (OPT H51650-3BAC (V15653)) (OPT 102LH3W (V72962)) (OPT NS202486-02 (V80539)) (OPT T6C1032CD (V11815)) -----*-----		4
180	MS24665-153		..PIN-COTTER		2
185	NAS6705DE25		..BOLT		2
190	AN960-516L		..WASHER		4
195	BACN10JD5ASU		..NUT- (V15653) (SPEC BACN10JD5ASU) (OPT BACN10JD5ASU (V56878)) (OPT BACN10JD5ASU (V72962)) (OPT BACN10JD5ASU (V92595))		2

54-52-10

 ILLUSTRATED PARTS LIST  
 01.101 Page 1026  
 Apr 01/92

**BOEING**  
 COMPONENT  
 MAINTENANCE MANUAL

FIG. & ITEM	PART NO.	AIRLINE PART NUMBER	NOMENCLATURE 1234567	EFF CODE	QTY PER ASSY
01-					
200	BACB28Z5G080		..BUSHING		2
205	BACB28AA5B018		..BUSHING		4
210	313T2106-4		..FITTING		1
212	HST106K2		.BOLT- (V56878) (SPEC BACB30VT6K2) (OPT VL106K2 (V92215)) (OPT VL106K2 (V97928)) (OPT HST106K2 (V06725)) (OPT HST106K2 (V73197))		4
214	BACB30BL6		.COLLAR		4
215	69B91056-600		.BOLT-INDEX		2
220	AN960PD716		.WASHER		2
225	313T3116-1		.NUT-SERRATED		2
230	NAS1805-7		.NUT		2
235	HL11VAZ5-6		.BOLT- (V56878) (SPEC BACB30NW5K6) (OPT B30NW5K6 (V97928)) (OPT HL11VAZ5-6 (V73197)) (OPT HL11VAZ5-6 (V92215)) (OPT HL11VAZ5-6 (V97928)) (OPT L803-5K6 (V06725)) (OPT HL11VAZ5-6 (V08524)) (OPT HL11V6 (V06725))		8
240	HL70-5		.COLLAR- (V56878) (SPEC BACC30M5) (OPT HL70-5 (V73197)) (OPT HL70-5 (V92215)) (OPT 66014-5 (V56878))		8

54-52-10

ILLUSTRATED PARTS LIST  
 01.101 Page 1027  
 Apr 01/92

FIG. & ITEM	PART NO.	AIRLINE PART NUMBER	NOMENCLATURE 1234567	EFF CODE	QTY PER ASSY
01-					
245	313T3115-1		.PLATE-SERRATED		2
250	313T2100-46		.DOUBLER-BOLT		2
255	MS24665-134		.PIN-COTTER		2
260	BACB30NM4DK21		.BOLT- (V06710) (SPEC BACB30NM4DK21) (OPT BACB30NM4DK21 (V06725)) (OPT BACB30NM4DK21 (V06950)) (OPT BACB30NM4DK21 (V08524)) (OPT BACB30NM4DK21 (V27624)) (OPT BACB30NM4DK21 (V56878)) (OPT BACB30NM4DK21 (V73197)) (OPT BACB30NM4DK21 (V80539)) (OPT BACB30NM4DK21 (V92215)) (OPT BACB30NM4DK21 (V93907)) (OPT BACB30NM4DK21 (V97928))		2
265	BACN10JD104		.NUT- (V15653) (SPEC BACN10JD104) (OPT BACN10JD104 (V56878)) (OPT BACN10JD104 (V72962)) (OPT BACN10JD104 (V92595))		2

54-52-10

 ILLUSTRATED PARTS LIST  
 01.101 Page 1028  
 Apr 01/92


**BOEING**  
 COMPONENT  
 MAINTENANCE MANUAL

FIG. & ITEM	PART NO.	AIRLINE PART NUMBER	NOMENCLATURE 1234567	EFF CODE	QTY PER ASSY
01-270	H2388-3		.LATCH- (V83014) (SPEC 10-60401-7)		2
275 275A	HL13VAZ6-3 HL11VAZ6-3		DELETED .BOLT- (V56878) (SPEC BACB30NW6K3) (OPT B30NW6K3 (V97928)) (OPT HL11VAZ6-3 (V73197)) (OPT HL11VAZ6-3 (V92215)) (OPT HL11VAZ6-3 (V97928)) (OPT L803-6K3 (V06725)) (OPT HL11VAZ6-3 (V08524)) (OPT HL11V3 (V06725))	B	6
-275B	HST11AG6-3		.BOLT- (V06725) (SPEC BACB30VU6K3) (OPT HST11AG6-3 (V73197))	C	6
280	HL79-6		.COLLAR- (V56878) (SPEC BACC30M6) (OPT HL79-6 (V73197)) (OPT HL79-6 (V92215)) (OPT 66014-6 (V56878))	B	4
-280A	BACB30BL6		.COLLAR	C	6
285	313T2100-111		.DOUBLER	B	1
290	313T2100-112		.DOUBLER	B	1
295	313T1108-1		.PLUG ASSY-ACCESS HOLE	B	2
300	CA3105-832-8		..SCREW- (V73439) (SPEC BACS12N8-8) (OPT CA3105-832-8 (V78189))	B	1
305	313T1108-3		..NUT	B	1

54-52-10

 ILLUSTRATED PARTS LIST  
 01.101 Page 1029  
 Apr 01/92

FIG. & ITEM	PART NO.	AIRLINE PART NUMBER	NOMENCLATURE 1234567	EFF CODE	QTY PER ASSY
01-					
310	313T1108-2		..SEALER	B	1
315	MS51844-82		..SLEEVE	B	1
320	MS29523-1		..HOOK	B	1
325	CL100-3B120		..CABLE ASSY- (V99862) (SPEC BACC13Y3B120)	B	1
330	MS29523-1		.HOOK	C	2
335	56674-1		.PLUG- (V84256) (OPT ITEM 335A)	C	2
R -335A	56674-2		.PLUG- (V84256) (OPT ITEM 335)	C	2
340	313T2103-3		.PLATE- (OPT ITEM 340A)	C	1
-340A	313T2103-1		.PLATE- (OPT ITEM 340)	C	1
345	313T2103-4		.PLATE- (OPT ITEM 345A)	C	1
-345A	313T2103-2		.PLATE- (OPT ITEM 345)	C	1

# 54-52-10

 ILLUSTRATED PARTS LIST  
 01.101 Page 1030  
 Apr 01/92